

Gas Door Guard Instructions



1. Place Door Guard so it lines up with lip of gas door and up against the plastic trim where the bottom two holes are in the Door Guard.



2. Using a screw gun or similar device to install the two lower screws.



3. Position top of Door Guard with finger in corner of body and open and close gas door to make sure door clears gas door guard. You want to position it as close as possible to gas door, but NOT TOUCHING.



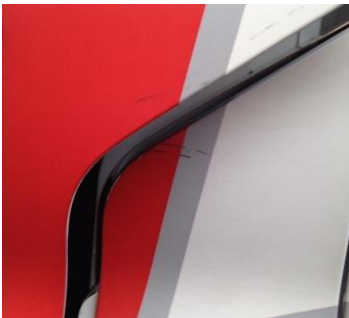
4. Using a pencil draw a line at the top of the Door Guard on the Transit body so when you remove the backing of the double sided tape you will know where to place it.



5. Clean area where double sided tape will stick to with alcohol. Be careful not to remove the pencil line. Remove tape backing and place in position pressing firmly.



6. Check again for clearance with the gas door and the Door Guard you can bend and move the Door Guard a small amount if you need to adjust for clearance or remove one end of the double sided tape to reposition.



7. Once Door Guard is in position check for driver's door clearance.



8. Now that Door Guard is in position and clears gas door and driver's door you can add third screw at top of Door Guard. Check for clearance again.

If you have any questions please contact:
TransitOffRoad.com | 930 N. Amelia Ave. San Dimas, CA
91773 | (909) 971-3774