

TRANSIT OFFROAD

Rear Shock Relocation Kit

Installation Guide:

NOTE: We recommend that a certified mechanic install this kit.

This kit must be used with a 2" lift kit to prevent damage from bottoming out the shock.



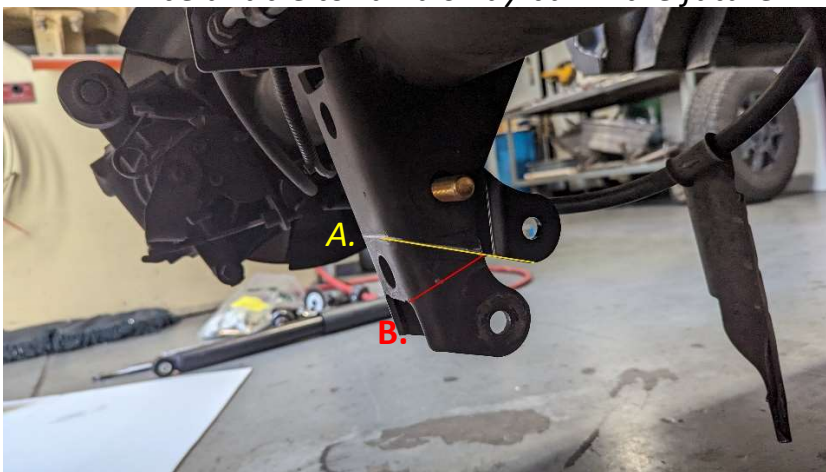
Installation

1. Remove the rear shock
2. Install the lower shock relocation bracket with the 1/2-20x3" bolt as shown below.



3. Using the new bracket as a guide use a straight edge to mark a cut line on the old shock mount.
 - a. **With Sway Bar:** Mark a straight line on both sides as shown in the picture below with the **red line**, to retain the lower sway bar mounting hole.
 - b. **Without Sway Bar:** Mark a straight line on both sides as shown in the picture below with the **yellow line**. The line should be $\frac{1}{4}$ " above the sway bar mounting hole.

***Note:** This method will give you greater ground clearance and a cleaner look; however, by eliminating the lower mounting hole you will be unable to run a sway bar in the future.*



4. Remove the new shock bracket and using an angle grinder with a cut-off wheel carefully cut along the line you marked.

5. Re-install the new bracket and install a provided $\frac{1}{2}$ -20 x $1\frac{1}{4}$ bolt, nut retainer and washer in the upper sway bar mounting hole as shown and leave hand tight so that you can install the lower bolt.



6. Install the $\frac{1}{2}$ -20 x 3" bolt, aluminum spacer, washer and lock nut as shown below. Now tighten the upper and lower bolts to 80ft/lbs.



7. Install the upper shock mount reinforcement plate as shown below using the provided $\frac{1}{2}$ -20 x 3" bolt, nut and washers as shown below and tighten to 80ft/lbs.

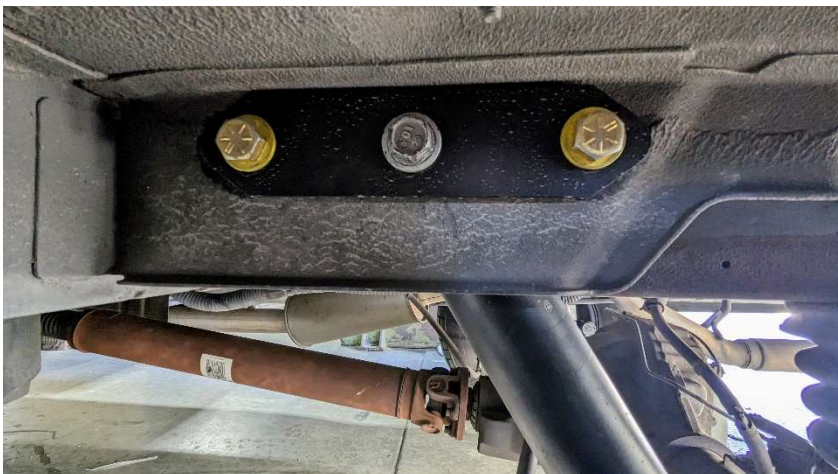


Before installing reinforcement plate



After Installing reinforcement plate

8. Re-install the shock to the upper mount using the original bolt and nut. Tighten to 80ft/lbs.



9. Compress the shock to until you can line it up with the lower shock mount and install the original bolt as shown below.



10. Reinstall shock/brake line guard and tighten to 80ft/lbs.



You have completed the installation of the Transit Offroad Rear Shock Relocation Kit!

Questions? Please Call (909) 971-3774

Foes Fabrications Inc.
930 N Amelia Ave
San Dimas, CA 91773
Info@transitoffroad.com
